

Things To Do In Hawaii and Waikoloa



Waikoloa Vacation Rentals

www.waikoloavacationrentals.com

Things To Do In Hawaii and Waikoloa

Table of Contents

Chapter 1: Golf ~~~~~ 2-4

Waikoloa Village Golf Course
Mauna Lani Golf Courses
Mauna Kea and Hapuna Golf Courses
Big Island Country Club
Big Island of Hawaii Golf
Enjoy Great Rates on Golf

Chapter 2: Wedding Destinations ~~~~~ 5-9

Sullivan Estate
Kahua Ranch on the Big Island of Hawaii

Chapter 3: Luas ~~~~~ 10-11

King Kamehameha Luau
Legends of the Pacific Luau at Hilton Waikoloa Village
Mauna Kea Resort Luau
Gathering of the Kings Luau at Mauna Lani Resort

Chapter 4: Tours ~~~~~ 12-18

Volcano Trips
Anna's Ranch Waimea
Pearl Harbor Tours
Mauna Kea Tours
Big Island of Hawaii Helicopter Tours
Lava Boat Tour
Big Island of Hawaii Snorkeling Tours
Flumin' da Ditch Reopens as Kohala Ditch Adventures

Chapter 5: Scenic ~~~~~ 19-20

Akaka Falls State Park
Kekaha Kai State Park

Table of Contents (cont.)

Chapter 5: Scenic (cont.) ~~~~~ 19-20

Pololu Valley
Waipio Valley

Chapter 6: Surfing ~~~~~ 21-23

Kona Surf Film Festival at Mauna Lani Resort
Surf, Stand Up Paddle, and Kayak with Kona Boys
Ocean Sports at Waikoloa Beach Resort

Chapter 7: Bike and Recreation ~~~~~ 24

Waikoloa Beach Resort Bike and Scooter Rentals
ATV Outfitters Introduces Mountain Bike Outfitters

Chapter 8: Unique Hawaii Activities ~~~~~ 25-28

Horseback Riding on the Big Island of Hawaii
Hilton Waikoloa Village Pool Pass
Mauna Kea Stargazing
ZipLine Big Island Style

Chapter 9: Whale Watching ~~~~~ 29-30

Whale Watching in Hawaii
Body Glove Whale Watching
Whale Watching at Hali'i Kai

#1

Things To Do In Hawaii and Waikoloa

Golf

Waikoloa Village Golf Course

A fifteen-minute drive inland will take golfers to the Waikoloa Village Golf Course. This public course lives in the foothills of Mauna Kea and displays views of the Pacific Ocean. It is a great location for anyone looking to play a round, but spend a bit less on the experience.

The Waikoloa Village Golf Course is a fully functioning, eighteen-hole golf venue with pro shop, clubhouse restaurant, driving range, and more. Rental clubs, walking and riding rates, as well as multi-round discounts are available.

This course may have special pricing based on both the time of day and time of year as well.

Mauna Lani Golf Courses

About ten minutes north of the Waikoloa Beach Resort is the Mauna Lani Resort, which offers two beautiful golf selections, the Mauna Lani North and South Courses. Between the two venues thirty-six holes of championship golf are provided for both avid and novice players.

The Mauna Lani North Course highlights rolling terrain and Kiawe (mesquite) forests which is very different from the Mauna Lani South Course. This selection has one of the most photographed over water greens in the world.

The resort also offers a keiki, or children's, course great for families looking to play some golf without the need to be on the championship courses. Special rates are available for this experience.

Lunch and dinner are available at Huli Sue's at Mauna Lani, daily from 11am to 8pm and a full service pro shop is onsite to assist with any questions or merchandise needs.

These courses may have special pricing based on both the time of day and time of year.

Mauna Kea and Hapuna Golf Courses

A twenty-minute drive north from the Waikoloa Beach Resort along the Kohala Coast will take travelers to both the Mauna Kea and Hapuna Golf Courses. These thirty-six

holes of breathtaking fairways were designed by golf legends Robert Trent Jones Sr. (Mauna Kea Golf Course) and Arnold Palmer and Ed Seay (Hapuna Golf Course). Offering some of the greatest golfing on the island, each course offers different views, challenges and overall experiences for any golfer.

Both courses offer a complete pro shop along with other facilities such as a driving range, locker rooms, shower facilities, and more. The Mauna Kea Golf Course does offer a clubhouse restaurant named 'Number 3' offering food and pupus from 11am to 5pm daily.

These courses may have special pricing based on both the time of day and time of year as well as golf instruction.



Big Island Country Club

Located between Kona and the Waikoloa Beach Resort on Highway 190, or the Hawaii Belt Road, the Big Island Country Club offers eighteen holes of golf designed by acclaimed golfer, Perry Dye. This par seventy-two course was created with all golfers in mind, regardless of skill level.

This course may have special pricing based on both the time of day and time of year. Special group rates are available and the Big Island Country Club offers rentals and lessons as well.

This is a great golf venue for anyone wanting to get away from the resort environment and have a greater vantage point for island viewing.

The Big Island Country Club is located about a thirty minute drive from the Waikoloa Beach Resort.

Big Island of Hawaii Golf

On the Big Island there are quite a few golf courses to choose from. Locally, there are four fantastic options between the Waikoloa Beach and Mauna Lani Resorts.

At Waikoloa Beach Resort, golfers can choose between the Beach and the Kings' Courses, two different experiences offering a greater selection to the avid golfer.

The Beach Course, designed by Robert Trent Jones Jr., allows golfers to play without sacrificing the ocean view. The Kings Course, designed by former British Open champions Tom Weiskopf and Jay Morrish, has Big Island Mountain Views. Check-in for both locations takes place at the Kings' Course clubhouse. The Waikoloa Beach Resort Golf Courses offer a shuttle within the Waikoloa Beach Resort area for both pre and post round play.

Just a few miles up the road, the Mauna Lani Resort offers two beautiful selections named for their physical location, the Mauna Lani North and South Courses. Offering 36 holes of championship golf between the two venues, The Mauna Lani North Course, characterized by rolling terrain and kiawe (mesquite) forests, is a sharp contrast to The Mauna Lani South Course. This selection has one of the most photographed over water greens in the world.

A bit further north along Queen K Highway, stands thirty-six holes of great fairways. The Hapuna Beach Course, designed by Arnold Palmer and Ed Seay, along with the Mauna Kea Golf Course designed by Robert Trent Jones Sr., offer some of the greatest golfing on the island. Each course offers different challenges, views, and experiences for any golfer.

About fifteen minutes inland, Waikoloa Village offers a public course for anyone looking to play a round but spend a bit less on the experience. It is a fully functioning eighteen-hole golf venue with pro shop, restaurant, and more.

South of the resort, closer to Kona, the Big Island Country Club offers eighteen holes of play on the lower slopes of Mauna Kea. Designed by acclaimed golfer, Perry Dye, this par 72 course was created with all golfers in mind, regardless of skill level. Anyone looking to get away from the resort atmosphere will surely enjoy this experience away from it all.

These courses may have special pricing based on both the time of day and time of year.

Enjoy Great Rates on Golf

The Waikoloa Beach Resort golf courses offer a Gold Membership program to owners, which allows guests in their condos to enjoy golf at \$50 and \$75 at the Waikoloa Beach Course and Waikoloa Kings Course. This is a feature of vacation rentals that has become desirable to potential rentals.

#2

Things To Do In Hawaii and Waikoloa

Wedding Destinations

Sullivan Estate

A great venue available for wedding ceremonies and receptions on the Big Island is Honuala'i, or the Sullivan Estate. Located on Puako Bay, this 11,000 square foot, one and a half acre private property, can host any size function up to one hundred people.

Originally, the property was designed and built as an exclusive corporate retreat location. Since 1985, it has hosted parties and guests along with movies and commercials with its understated elegance and perfect location.

With an oceanfront setting, large travertine pool deck, available open air living area, and much more, Honuala'i is certain to create a completely memorable experience. Available for daytime and evening events, the six bedroom, eight bathroom estate with lush tropical foliage, manicured grounds, and picture perfect setting will add to the experience.

Honuala'i is the ideal wedding location, with a wide open lawn area on the point facing northwest towards the setting sun. Privacy and tranquility abound.

The property does have preferred vendors and outside catering, entertainment, and any event support will be necessary. The Honuala'i staff will work with the catering staff and outside vendors to ensure a successful event.

There are deposit, insurance, and other requirements necessary to host an event, but it will be well worth it. The estate has hosted many functions and the staff truly understands what it takes to make any wedding or party successful.

Kahua Ranch on the Big Island of Hawaii

Beaches, sunsets, lei's, waterfalls, the ocean breeze, and the aloha of Hawaii can make any wedding even more memorable. Whether there are three people or one hundred and three in the wedding party, the Big Island has everything to make it a total experience.

According to Frommers, a world-renowned travel resource, "Hawaii is a great place for a wedding. The islands exude romance and natural beauty and after the ceremony, you're already on your honeymoon. The members of your wedding party will most likely be delighted since you've given them the perfect excuse for their own island vacation."

When deciding where, when, and how to get married, many questions may arise. Over the years, Waikoloa Vacation Rentals has hosted several wedding parties at their vacation rental locations. Here are some things learned along the way that may be helpful.

One option available for wedding services here on the Big Island of Hawaii is the beautiful Hilton Waikoloa Village. The property offers full service wedding planning, catering, and a large assortment of ceremony and reception venues able to accommodate three to three hundred guests or more. These venues currently have pricing structures based on the time of day as well as the season.

The Hilton Waikoloa Village has four different venues for a ceremony. Each of these venues were specifically selected by the hotel to create a truly memorable experience based on view, size, and overall atmosphere. Some of the sites do have a specific number of guests they can accommodate, making them that much more intimate.



The Wedding Chapel is a smaller venue for up to eighteen guests while the Palace Garden and Grand Staircase can accommodate up to one hundred attendees. Buddha Point is a very private venue, located at the north end of the property, along the coastline. With a fabulous view of the ocean and the surrounding area, it is the perfect location for up to forty guests. This can truly be a place for a spiritual event.

After the ceremony, the property has five different locations available for the reception. Based on the size of the party, the decision may be difficult, as each venue is very different from the next offering an exciting location for any group. These venues have rental fees; however, they can be waived with an established food and beverage minimum.

Donatoni's, The Palm Terrace, and The Ocean View Terrace are great venues that can accommodate a wide variety of groups and their needs. The Lagoon Lanai can accommodate up to three hundred guests or, two hundred with a dance floor

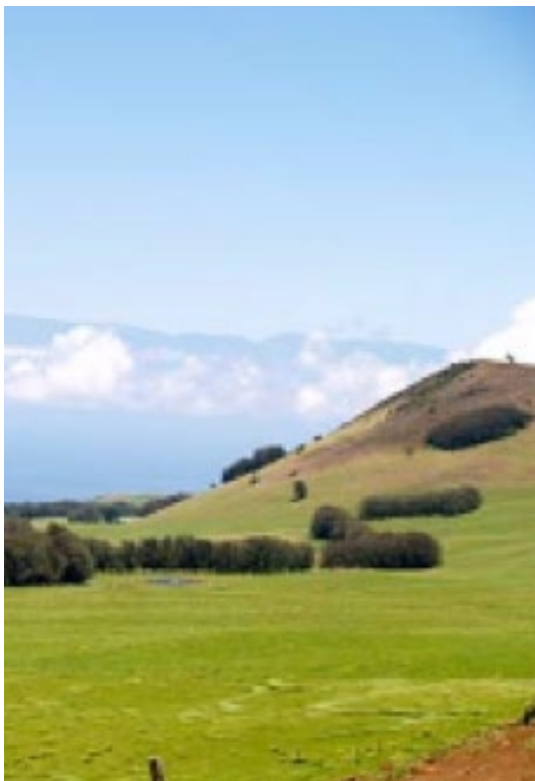
and head table. The backdrop is a lagoon, tiki torches, and the stars above. Should weather become an issue, a covered area just off the lanai is available for the festivities to continue. If a larger area is necessary, ballrooms are available for up



to nine hundred guests. This venue is great for the groups looking for more square footage or protection from the weather.

The property does all of its catering in-house. Sample menus, preferred vendor lists for entertainment, photography, florists, spa options and more can be viewed below. If a wedding party has an outside vendor in mind such as a photographer or disc jockey, they may work the event. If they are not a preferred vendor with the hotel, there will be an additional charge for them to work on property. This allows them access to the grounds and the event.

The wedding department has some fantastic packages including everything necessary to create an unforgettable experience. An à la carte menu is also available with specialty items such as harpists, solo acoustic guitarists, and more.



Shuttle service is available between the property and your villa or condo using SpeediShuttle, a reliable transportation provider throughout the islands. SpeediShuttle is available for larger groups at 877-242-5777.

Another available avenue is a private wedding coordinator to help with the arrangements. There are quite a few wedding planners on the island. These planners can offer a preferred vendor list for services such as catering, photography, makeup, entertainment, floral arrangements, etc. They can also assist with marriage certificates and public area permits. As these choices are extremely personal, viewing credible resources can be a valuable tool as well. Please contact Waikoloa Vacation Rentals for recommendations regarding these companies.

When contacting wedding planners, vendors, or anyone who may have an integral part in the event, there are a few extremely important things to consider and evaluate. Do they respond appropriately? What feeling do they evoke with

their communication via email and telephone? Are they prompt? Do they offer confidence during the conversation? All of these criteria can help ensure the greatest of service and most positive overall experience.

Any of the wedding coordinators will have their preferred locations based on the needs of the client, size of the group and other various requests. Some of these locations can host the reception, ceremony or both. Wedding planners can assist with those decisions as well.

Some ceremony locations include Kukio (Hualalai) Beach, Pu'uuhonua o Honaunau National Historic Park, Kikaua Point Beach Park, Saint Peter's Church, Paradise Cove, and Secret Beach, just to name a few. Some of these venues do require permits if money is changing hands for goods or services rendered, especially if it is a public space. Any coordinator or authorized vendor can assist with these regulations.

Reception locations for a truly unique island experience are Anna's Ranch, Parker Ranch, Kahua Ranch and the Sullivan Estate among many others. Some Big Island properties are equipped to host receptions too.

Some of the advantages to getting married on the Hawaiian Islands are the unique rehearsal dinner venues. Luau's are a great option as they are interactive and complete with food, beverage, atmosphere, and entertainment. Local restaurants such as Merriman's Waimea, The CanoeHouse at the Mauna Lani Bay Hotel and Bungalows, or any of the larger hotel properties can host such events as well.

In Hawaii, tradition and culture reign supreme and are part of daily life. Their place in weddings is no different. Some examples are both the lei presentation, a symbol of love, respect and spiritual connection and the blowing of the conch shell. This act symbolizes the desire of all men and women to use their breath of life, also known as 'ha'. The shell is a form of communication with anyone whom can only be present in spirit.



As these examples are extremely important to the Hawaiian culture, they most certainly are a part of the Hawaiian wedding celebration. The inclusion of the lei is typically part of the ceremony but please ask if the blowing of the conch shell is of interest as well.

An extremely important decision necessary to complete the total Hawaiian wedding experience are the accommodations.

Considerations in regards to amenities and group dynamics are necessary. Waikoloa Vacation Rentals has quite a few luxury vacation rental selections available. These vacation rentals range in

size from two bedrooms with 1,020 square feet of space, to three bedrooms, three and a half baths with 2,147 square feet. There are additional floor plans and sizes in between. These options will ensure any wedding party remains comfortable and allows everyone to be close to each other while also having plenty of space to relax. With amenities such as expansive lanais, additional outdoor kitchens, Anaeho'omalu Bay and both the Kings' and Queens' Shops within walking distance, there are plenty of activities and options for everyone.

If one is in search of a wedding venue with history, rustic beauty, and the beautiful Big Island as the backdrop, Kahua Ranch may be the perfect place. It is not on the water, it does not have sand, but what it does have is over eight thousand acres of working active ranch land and three thousand two hundred feet of elevation offering a change of scenery with great views of the Big Island of Hawaii.

Located about an hour from Waikoloa Beach, this amazing property has the space for up to two hundred guests on its main deck, with plenty of room for larger parties outside along with beautiful locations to hold the ceremony.

Kahua Ranch does work with a few local caterers to make the event even better; however, they welcome anyone hired by private parties or wedding coordinators to organize the event as well.

With competitive prices, a beautiful property, and friendly staff, Kahua Ranch could be the location for any bride and groom looking for something less traditional, yet still wanting to be immersed in paniolo (Hawaiian for cowboy) culture dating back to 1928.

The ranch also offers a program through an independent planner titled 'An Evening at the Ranch'. It is an educational, unique, and fun experience for the entire family. Amazing sunsets, food, live music, and much more can be found on the ranch.

#3

Things To Do In Hawaii and Waikoloa

Luau

What trip to Hawaii would be complete without the spectacular cultural experience of a Luau? Featuring traditional foods and entertainment, these gatherings highlight legends, music, dance, storytelling, and the spirit of the native islanders.

With entertainment options available all along the Kona Coast, any group looking for a unique experience can find one. Selections include The Sunset Luau at the Waikoloa Beach Marriott, Legends of the Pacific Luau at the Hilton Waikoloa Village, the Gathering of the Kings Luau at the Fairmont Orchid Plantation Estate, the Luau at the Mauna Kea Beach Hotel, and the Island Breeze Hawaiian Luau at the King Kamehameha Hotel in Kona.

These luaus range from the traditional to more unique evolved performances and between the multiple venues, are offered almost every night of the week. Each one is distinct and unique from the others. Each has chosen its own focal point, yet the heart of the luau is evident in each performance as they join people together to share in incredibly tasty meals, and embrace the island ways of life through song and dance under the stars.

King Kamehameha Luau

Every Tuesday, Thursday, and Sunday evening beginning at 5:30pm, the King Kamehameha Hotel and Island Breeze Productions, present their Hawaiian Luau on newly renovated luau grounds. They offer authentic luau favorites featuring imu roasted succulent kalua pig, lau lau, poi, and more. Prepare to be dazzled by music, fire dancing, bravery, and skill throughout the event.

The price of the event, \$78.80 per person, includes the buffet, open bar, tax, and gratuity. Discounts are available for children.

Legends of the Pacific Luau at Hilton Waikoloa Village

On the Waikoloa Beach Resort, the Hilton Waikoloa Village does a great job offering the sights, sounds, and tastes of Polynesia every Tuesday, Friday, and Sunday evening.

When the doors open at 5:30 PM, prepare to be greeted by the exotic Polynesian dances and the music of the Pacific Rim, highlighted by a Big Island Luau Buffet featuring a large variety of local flavors, fire knife dancing, and an imu presentation. The price of the event, \$109 per person, includes two alcoholic drinks or kiddie

cocktails, buffet, show, self-parking, tax, and gratuity. A keiki, or children's, buffet is available for those under twelve years old.

Show only seating is available for less of a cost and upgraded seating is an option for an additional charge. Discounts are available for teens, children, and seniors.
Mauna Kea Resort Luau

Every Tuesday evening from 6pm to 8:30pm, the Mauna Kea presents their luau with an ocean front location. They offer an extensive authentic menu featuring luau favorites such as kalua pig, island fish, lomi salmon, and more. Prepare to be dazzled by cultural dance, music, fire dancing, and much more.

The price of the event, \$96 per person, includes the buffet, a complimentary mai tai or children's drink, tax, and gratuity. Show only seating is available for \$36 per person and discounts are available for children.

Gathering of the Kings Luau at Mauna Lani Resort

The Fairmont Orchid on the Mauna Lani Resort offers a luau experience with Island Breeze Productions certain to entertain family and loved ones.

The performance is comprised of traditional Polynesian and modern choreography depicting the journey across the Pacific to Samoa, Tahiti, Aotearoa, and Hawaii. This evolved performance is sophisticated, vibrant and creative with smooth transitioning, and modern dance. Culinary offerings nicely correlate to each distinct culture.

The property offers a performance on Saturday evenings for \$99 per person, upgraded seating is available for an additional cost, and children receive a discount.



#4

Things To Do In Hawaii and Waikoloa **Tours**

Volcano Trips

If there is one thing Hawaii is known for, it is the volcanos throughout the state and more specifically the Big Island of Hawaii. Some lie dormant but others like Kilauea, do not.

Some days, onlookers can physically view lava while other days, only the steam vents can be seen. Typically, it is more impressive to watch volcanic activity during the early evening hours, as the red lava color can be seen in the darkness.

The eruption of Kilauea Volcano began in 1983 and continues today. Kilauea is one of the world's most active volcanoes. According to Hawaiian mythology, the goddess Pele calls Kilauea her home. It is said, that she controls the volcanic activity. It is also a popular belief that bad luck befalls anyone who removes lava rock from where it was found on the island.

Travelers can expect the drive from Waikoloa Beach to the Hawaii Volcanoes National Park to take about least two and a half hours via Highway 190 without stopping along the way. Traveling distance is just over one hundred miles. In preparation for this adventure, it is important to call the Visitors Information Line for updates. With the most recent eruption in April, 2008 and the continuous emission of sulfur dioxide, hazards can include respiratory problems and road or park closures. There are different color-coded levels for sulfur dioxide conditions.

ROUTE #1

Waikoloa Vacation Rentals recommends leaving at about 8am. There are some great sites and good food along the way. With no stops, it will take about two and a half hours to reach Volcano National Park.

From the resort, take a left on the main highway. Take a right on Waikoloa Rd (at the helicopter pad). Take that all the way up to HIGHWAY 190 toward Waimea, just past Waimea, the road turns into HIGHWAY 19, Breakfast and lunch are available at Tex Drive-in. This is a great local breakfast location with hot Malasadas there as well (It's a kind of doughnut) Another restaurant Waikoloa Vacation Rentals recommends is Hokulani Steakhouse. They offer all day dining and a family friendly environment.

Along the way, Waipio Valley lookout, has a beautiful coastline view of the surrounding area. You can then stop at Akaka Falls, a 420 foot waterfall, with plenty of hiking nearby. To get a good viewing and enjoy, it should take about thirty to

fourty-five minutes. Take that all the way around the island until you get to HIGHWAY 11 to the Volcano National Park.

To return to Waikoloa Beach Resort, going back the same way is an option. Another option is to take HIGHWAY 11 towards Kona and arrive from the south via HIGHWAY 19.

ROUTE #2– Saddle Road

This route is considered a bit faster but also a little bit more dangerous in terms of the terrain. Out of the resort, take a left on the main highway. Take a Right on Waikoloa Rd just as the directions state above. Take that toward Waimea. Take a left on 190 again, toward Waimea. Here is when the directions differ from above, take a right on HIGHWAY 200 (Saddle Road), this will later connect to HIGHWAY 19. Take a right on HIGHWAY 11 to Volcano National Park.

Waikoloa Beach Resort is reachable from the south. HIGHWAY 11 goes all the way around to Kona. Take Highway 19 North to the resort. The backside of the island is all black lava. Sunset is at about 7pm and it may be getting dark, depending on how much time was taken for the excursion.

If the lava is flowing and visible, we recommend getting to the hiking trail two hours prior to sunset to view it properly.

Once in the park, there will be a small fee. It is \$10 per car unless there are more than fifteen people. It will be \$5 per person.

There are some organized land and boat tours available for a cost, that show a different perspective. The crater can be seen by helicopter as well.



Anna's Ranch Waimea

As far as weddings go, there are quite a few options on the Big Island of Hawaii for both ceremony and reception sites. One such unique location is Anna Ranch Heritage Center, Waimea, Hawaii. Dating back to 1847, Anna Ranch showcases the history of ranching on the island and captures the past, bringing it to present day island life. Anyone who appreciates history will truly enjoy this venue, looking to the past, the present, and as weddings demand, the future.

Located just a half mile from downtown Waimea, Anna Ranch Heritage Center offers just under fourteen hundred square feet of indoor space, several acres of outdoor options, and beautiful well-manicured gardens to accommodate almost any size party. Anna Ranch has ample resources to create a fabulous experience. With a professional and attentive staff, capable preferred vendors, and a fine history of event planning, the ceremony and reception are certain to be well organized.

Anna Ranch Heritage Center has tried to create the total experience offering an onsite blacksmith and saddle maker. These, along with other children's activities, are certain to create special memories for adults and children alike. Programs for children are available for private events, and souvenirs will accompany those who take part in the programs.

Pearl Harbor Tours

Pearl Harbor is one of the most popular attractions the Hawaiian Islands has to offer. There are two ways to make this day trip from the Big Island, either take a package tour from the Big Island or schedule the day at the convenience of the group with guided tours available on Oahu.

There is a particular tour company that offers the trip as an all-inclusive package. Their fees include airfare, transportation, and a fully guided tour. This is the simplest way to complete the tour without having to worry about the details generic playix. Everything is handled for the group by the tour organizers. It does make for a long day as the tour flight departs Kona at roughly 5 am and returns at about 9 pm, however if Pearl Harbor is a must see, it is completely worth it. The tour includes a quick visit to other parts of Honolulu as well.



The other option is to schedule the trip without booking through an all-inclusive guide service. Pearl Harbor is only about a ten minutes' drive from the Honolulu airport. Taxi service and car rentals are both available for transportation. There are also quite a few tours once on Oahu to choose. This includes self-guided tours with an iPod or guided tours of the Missouri. Pearl Harbor does sell a limited number of tickets daily so utilizing an organized tour does increase the chances of viewing the Arizona Memorial.

One of the most popular off island attractions is Pearl Harbor, which is located on Oahu. Many know the history of Pearl Harbor, but to see the U.S.S. Missouri and Arizona Memorial is person offers an experience of a lifetime!

I highly recommend making the trip a full day trip. You can purchase your interisland air here. You will want to fly into HNL. You can get a rental car and Pearl Harbor is about a five minute drive from the airport. There is a \$16 admission fee for the U.S.S.

Missouri and you can also get an audio tour or an iPod video tour for less than \$10. The audio tour is sufficient if you desire one of them. It is hard to follow the video tour while also walking throughout the U.S.S. Missouri. The cost for an adult is \$60. If you want to take the longer tour which also takes you to the Pacific Aviation Museum the cost is \$75.

While on the U.S.S. Missouri you will have the opportunity to stand on the “surrender deck” where World War II ended. While inside you will get to see the quarters in which the soldiers slept. You will also get a look at all the weapons that made the U.S.S. Missouri so feared.

Getting to take a boat out to the U.S.S. Arizona Memorial and seeing the “Black Tears of the Arizona” is breathtaking.

Although you can do all of this on your own, I would highly recommend taking one of the guided tours. It can be a little overwhelming if you are not familiar with everything. There are shuttles and boats that take you from place to place. If you are on one of the guided tours it helps out a ton, you get a lot more information, and the cost is not that much more.

Mauna Kea Tours

Majestically standing at an elevation of 13,796 feet is Mauna Kea, which means “White Mountain”. Its name comes from its snow-capped summit in the winter. It is the tallest mountain in the world at 33,000 feet, when measured from its base at the sea floor. Mauna Kea is home to the Hawaiian goddess Poliahu. The last eruption was 3,500 years ago.

The summit is the home to some of the world's leading astronomical observatories such as Keck, Gemini, Canada-France-Hawaii, Caltech and the University of Hawaii, where the view is clear 300 nights a year.



Waikoloa Vacation Rentals does recommend arriving at the visitors' center toward late afternoon into the early evening. As the elevation is so dramatic, the night sky is one of Mauna Kea's most impressive features.

There are two options to visit this historical site. The First would be to drive with your loved ones, family, and friends to the visitor center at Mauna Kea. There are great views and some activities at the 9,000 feet elevation. A four-wheel drive vehicle or commercial tour must be utilized to gain access to the summit, as ordinary vehicles are not capable of handling this road. The second would be a guided tour, allowing access to the higher elevation, observatory, and more.

To reach Mauna Kea, take Highway 190 north towards Waimea. The Saddle Road (named because it runs between Mauna Kea and Mauna Loa) is located on the

right, just before the 6-mile marker. After the 28-mile marker, turn left onto the Mauna Kea Access road. The Visitors Information Station is about 6 miles up the road, on the right. They are open from 9 AM to 10 PM daily. This trip takes about an hour and a half to two hours from Waikoloa Beach Resort.

Effects of high altitude and weather conditions are two factors that should be known prior to embarking. Be sure to check updated conditions, pack appropriately and take the recommended precautionary measures.

Big Island of Hawaii Helicopter Tours

Imagine a tour that can provide you with an aerial view of the glorious Big Island of Hawaii. One that will allow you to hover beside a cascading waterfall, suspend you over the active Kilauea Volcano, gently drift in and around mystical valleys, and take you through a journey of the majestic mountains of Mauna Kea, Mauna Loa, Hualalai and Kohala. There is nothing that can compare to the scenic experience of a helicopter tour. It is the only way to immerse yourself in the full beauty of the island. The breathtaking sights will completely consume you creating lifelong memories that will instill in you the essence of Hawai'i.

From short, budget tours that take you to the volcano to private valley landing tours, the Big Island of Hawaii has a tour for everyone. Helicopter tours are one of the most popular adventures on the Big Island and fill up quickly. The only way to truly experience the full beauty of the island of Hawaii is through a bird's eye view. From helicopter tours that take you to a secluded valley for a picnic lunch to "doors off" tours, there is an experience for everyone.

Our personal favorite tour has a perfect blend dedicated to bring the pure beauty of Hawaii to you. Experience the majesty of Hualalai, the seasonal snow capped mountains of Mauna Kea and Mauna Loa, the wrath of the Goddess Pele as she exhales billowing vog from Halema'uma'u Crater, the entry of the lava into the cool waters of the Pacific, the rainforests of the east, the lush valleys, white and black sand beaches of the coast and jaw dropping waterfalls all in one tour. What makes this tour different from any other tour is that you will experience an exclusive landing in a secluded valley near a mountain stream for a light lunch. The drifting clouds over the valley walls perform tricks on your eyes, the cool waters of the stream dance over stepping stones and the overwhelming mana (sacred spiritual power) of the 'aina (land) will warmly embrace your spirit.



Lava Boat Tour

The Lava Boat Tour offers a great way to get to see lava without having to pay for a helicopter tour or having to take a hike. Although those are the two most popular ways to view the lava, at times they do not suite people's needs.

On the lava boat tour, you will take a "ferry style" 24 passenger boat from a town near Hilo called Pahoa along the volcanic coastline to Volcano National Park.

Along this tour you will have the opportunity to enjoy the waters off of the coast of the Big Island of Hawaii along with getting to see lava up close (as close as 20 yards).

My recommendations is spend the day enjoying Volcano National Park and then take the sunset tour. The Big Island is well known for the volcano and you can easily spend a day taking everything in.



Big Island of Hawaii Snorkeling Tours

The Big Island of Hawaii offers some of the best snorkeling in the world. The waters of the entire Kohala Coast are filled with tropical fish, sea turtles, and much more. While you can snorkel just off the beaches, you can not get the full experience unless you take one of the snorkeling tours.

Ocean Sports is the most convenient company, which offers tours that depart from A'Bay at Waikoloa Beach Resort, which is within walking distance from most vacation rentals in the Waikoloa Beach Resort.

Kealekekua Bay offers the best location for snorkeling in the area. Kealekekua Bay is located in Captain Cook where the Big Island of Hawaii was first discovered. Kealekekua Bay is one of the largest bays on the island and is a marine sanctuary. There is an abundance of tropical fish and at times a pod of spinner dolphins will stop by. Not only does Kealekekua Bay offer wonderful snorkeling, but the scenery is also amazing. Body Glove and Captain Zodiac offer snorkeling tours to Kealekekua Bay.

1. Body Glove - Body Glove takes you to one of the most popular areas on the Big Island of Hawaii, Pawai Bay. Here you will find a marine sanctuary filled of sea life. Not only will you enjoy great snorkeling, you will also have a fun time on the boat. Enjoy a continental breakfast, open bar, deli style lunch, restrooms, and a 15 foot water slide. The boat departs in Kona and on your way to Pawai Bay you will also see spinner dolphins along with other marine life. You can also upgrade to SNUBA or SCUBA for an additional fee.

2. Captain Zodiac Snorkel Tour to Kealekekua Bay - Captain Zodiac offers one of the most personalized and adventurous tours of all the snorkeling tours. With Captain Zodiac, you enjoy all the Kona Coast waters in a zodiac raft! The

crews are very personable and go the distance to insure your tour is an unforgettable one. As you leave Honokohau Harbor, destined for Kealekekua Bay, a marine sanctuary, you will encounter spinner dolphins, sea caves, and much more. Once you reach Kealekekua Bay, you will enjoy amazing snorkeling and beautiful scenery. Each tour is four fun filled hours out on the ocean.

Flumin' da Ditch Reopens as Kohala Ditch Adventures

One of the most popular tours on the Big Island of Hawaii has reopened. This fascinating tour takes you on a journey through the landscape Hawaii is known for. The native Hawaiian guides fill the tour with Hawaiian history and folklore.

The tour begins with an exciting off road excursion in a custom Pinzgauer which takes you to a launch site in the Kohala mountains. You will then enjoy a short hike in a jungle setting over a flume bridge with a view of a beautiful waterfall and an earth tunnel.

Shortly after that you will board a kayak on your way on a 2.5 mile journey through lush rainforest with views of water flumes, earth tunnels, and much more.

Kohala Ditch Adventures offers a tour that is sure to help make your stay on the Big Island of Hawaii one to remember.

Please call the Waikoloa Vacation Rentals concierge at (808) 333-1910 for special rates and more information.

#5

Things To Do In Hawaii and Waikoloa

Scenic

Akaka Falls State Park

Akaka Falls is the best known waterfall on the Big Island of Hawaii. Akaka Falls is a 442 foot tall waterfall that plunges down into a deep gorge. When you enter Akaka Falls State Park there is a circular trail through a tropical setting that will give you views of Akaka falls, streams, and also Kahuna Falls. One good thing to note is that you will want to go through the from the right as you enter. The right side of the trail is steeper and has a lot of stairs. If you are not able to make the full hike, you can go to the left and see Akaka

Falls and then turn around and come back the same way. Kahuna Falls is really just a smaller version of Akaka Falls so you would not be missing much.



Kekaha Kai State Park

Kekaha Kai State Park offers a nice setting for people that like to enjoy the outdoors. The main entrance to the state park is about 2 miles off of Highway 19 along an unpaved road. Once you arrive at the state park there is limited parking so you may have to park in some of the areas along the road further from the water. There are restrooms for your use at the parking lot. Once you head to the beach you will find beautiful white sand and the beautiful blue water Hawaii is known for.

The water here is filled with rocks so it is not the greatest area to swim. Mahaiula Bay and Makalawena Beach are also part of Kekaha Kai State Park and offering better areas for swimming. Along the beach you will find picnic tables along with grills nestled under trees. We also ran into a large family of goats, which seemed to be regulars at this beach. If you want to see this area, but want a better beach experience you can hike north to the beach at Mahaiula Bay and if you go even further north you will find a beautiful beach called Makalawena Beach.

Pololu Valley

Pololu Valley is my favorite of all the valleys on the north coast of the Big Island of Hawaii. As you reach the outlook you will see a beautiful black sand beach down below and a stretch of dense tropical sea cliffs. Although you can get some great pictures from the outlook, I would recommend hiking down into the valley to get the full experience.



There is a rocky trail that winds down the side of one of the cliffs that takes about 15 minutes to get down into the valley. Taking a couple of bottles of water would not be a bad idea. While walking down the trail you will come across a couple of spots that some of the most beautiful pictures of Pololu Valley are taken at.

Once you reach Pololu Valley, there is a beautiful black sand beach and a stream that runs back into the valley. The left side of the beach is really sandy as far out as you can go, but the right side is rocky. Pololu Valley is a great surf spot so typically you will see a lot of surfers.

After you spend time on the beach adventure out into the valley. You will find several trails that travel through the lush landscaping and back into the valley. You can get some amazing pictures of the valley along these trails. Throughout the trails you will see lots of wildlife, man made swings, and much more.

Make sure to wait until later in the afternoon or when the clouds to come out to trek your way out of the valley. The hike out is much tougher than the hike in.



Waipio Valley

Waipio Valley is the most well known of the seven valleys on the north side of the Big Island of Hawaii. Down in the valley is a beautiful black sand beach and some of the best surf on the island. You can spend a day walking along the stream that flows through the valley and checking out the lush tropical setting. You will also see a lot of roaming wildlife such as mules.

The view from the lookout is breathtaking enough, but if you are the adventurous type you may want to go down into the valley. There is a narrow steep, windy paved road down into the valley which can be used by four wheel drive vehicles. Although you can go in with a four wheel drive, it is not recommended. You can also hike down into the valley along the same road. Although it is a tiring hike, it is worth it.

#6

Things To Do In Hawaii and Waikoloa

Surfing

Kona Surf Film Festival at Mauna Lani Resort

In December, a very exciting event will be taking place at Mauna Lani Resort. The 8th annual Kona Surf-Film Festival will be held on Friday, December 2nd and Saturday, December 3rd. It is a benefit for the Big Island surf community raising funds for Kulana Huli Honua, the Betty Kanuha Foundation, Protect Kohanaiki Ohana, and the Surfrider Foundation.

Since 2003 Chad Campbell, a local Kona surfer and filmmaker, has brought the Kona Film Festival to the Big Island of Hawaii. This event showcases surf films from around the globe. It was founded for the purpose of bringing Hawaii's surfing O'Hana (Hawaiian for family) together for their love of the sport. Independent film makers share their passion for a chosen lifestyle. They offer the breathtaking visuals, sights and sounds that they have dedicated their lives to.

This year's selections have not yet been chosen so check back later in the year. The deadline for film entries is September 31st, 2011. The choices and winners will be made available sometime shortly after that date for December's event. For up to date information call (808) 936-0089.

This event has grown in popularity over the years and now helps support 'Sea-Thos', a cause aimed at reversing ocean damage. With supporters such as Julia Roberts and Jeff Bridges, the foundation is surely going to help this extremely important issue. Please take the opportunity to be a part of this unique occasion only available on the Big Island of Hawaii at Mauna Lani Resort.



Surf, Stand Up Paddle, and Kayak with Kona Boys

Kona Boys can help you with all your water sport needs. From kayaking to Stand Up Paddle Boarding and surfing, Kona Boys does it all. Kona Boys has two locations; "The Shop" is conveniently located near Kealahou Bay, which is one of the best places for water activities on the Big Island of Hawaii, and the "Beach Shack" which is located in Kamakahonu Bay, next to Kailua Pier in the heart of Kailua-Kona.

Although Kona Boys offer a variety of services, their award winning shop is known for providing kayak tour and rentals. They offer several kayak/snorkel tours to Pawai Bay or other locations and they can customize a tour to meet your desires. If you are the adventurous type, you can rent a kayak and tour Kealahou Bay on your own. Your rental includes a dry bag, soft cooler, backrests, life jacket, and paddles as well as the rack and straps to transport the kayak.

Stand Up Paddle Boarding is the fastest growing water sport in the world and it originated right here in Hawaii. Join Kona Boys for a SUP lesson and find out what all the excitement is about. Kona Boys also has a great variety of rental boards and if you're in the market they have the largest selection of new boards on the island. Delivery is available, so no matter where you are on the Kona Coast you'll be able to "paddle out".



It is almost impossible to think about Hawaii without thinking of its native sport, surfing. Whether you are a first timer looking for a lesson, a beginner who needs a rental and some tips on where they can surf without getting hassled, or an experienced surfer who needs current information on swell size and direction in order to make educated decisions on where to surf, drop in to Kona Boys for all of your surf needs.

Ocean Sports at Waikoloa Beach Resort

Ocean Sports provides the water activities in the Waikoloa Beach Resort. With their boat at A'Bay, you will find them easily accessible from all locations and just a short walk from Kolea and the Marriott. They offer all the main water activities throughout the day and at competitive rates giving you no reason to leave the Waikoloa Beach Resort.

Children 6-12 are 1/2 of the adult rate on all ocean adventures.

1. Snorkel Sail - Enjoy snorkeling with some of the amazing sea life Hawaii has to offer at a beautiful black sand beach. On the way back you will enjoy a picnic lunch as well as an open bar.

Rate: \$132.09

Inquire for availability

2. Champagne Sunset Cruise - Enjoy an evening just off of the Kohala Coast. Enjoy an open bar as you travel along the smooth waters until you reach to destination to stop and enjoy a beautiful Hawaiian sunset as you enjoy a wonderful buffet. I hope you find the buffet as pleasant as I did.

Rate: \$129

Departure time: around 4:30 pm depending on the time of year

3. Whale Watch - Daily whale watch cruises operate December through April when the spectacular humpback whale sightings are in full swing. These magnificent creatures migrate from Alaska an astonishing 3600 miles to Hawaii to mate and give birth in the warm tropical seas. Their breaching activities create an exciting spectacle that attracts thousands of visitors each winter season. While aboard the Alala, you will enjoy beverages and snacks on this two hour tour. You are guaranteed to see whales or you get to go again for FREE!

Rate: \$99

Departure Times: 8 am, 10 am

4. Whales and Cocktails - If the morning whale watch does not work for you, there is an afternoon whale watch which offers everything the morning whale watch does plus more. Enjoy an open bar as well as dancers doing traditional Fiji whale dances.

Rate: \$1119

Please inquire for availability

5. Scuba Diving - 2 Tank Dive: \$177; w/intro \$211.11

Private charters are available. The Manu Iwa holds up to 41 passengers, and the Seasmoke holds up to 49 passengers and the Alala holds up to 76 passengers. Your charter includes full open bar, vegetable crudite, gourmet cheese platter, and chips and salsa.

#7

Things To Do In Hawaii and Waikoloa

Biking and Recreation

Waikoloa Beach Resort Bike and Scooter Rentals

Looking for alternative transportation? There is another option, "ride it Island Style". Try Big Island Motorcycle Co. and experience their Motorcycle, Scooter and Bicycle Rental Service at Waikoloa Beach Resort. This will offer different perspectives of the island and will be great family fun for all. For families with younger children, bicycles are available by the hour or the day. Their prices are \$10 per hour, \$25 per day for adults. Children can rent them for \$5 per hour, \$15 per day. All bike rentals include a helmet and bike lock. This will allow families to venture out and be less concerned about safety and security. For scooters, they offer rentals for \$20 per hour if it is better to stay in the area. For a more complete experience; they offer half and full day rates, \$45 and \$60 respectively. All rentals include a helmet and bike lock. Drivers must be 18 years old or accompanied by a parent or legal guardian. Riders are welcome to ask about multi-day discounts for an extended rental period. For

life more on the edge, Big Island Motorcycles has that's right....Motorcycles. This will give any rider more freedom to travel the island in style. They offer both Metric and Harley Davidson for those who love the open road. The Metrics are available for \$100 for a half day, \$140 for a full day. Harleys are rented for \$120 for a half day, \$160 for a full. Prices include full insurance, helmets and riding jacket. GPS units are available for an additional price. Drivers must be over 25 years old and licensed to ride on two wheels. Enjoy the ride, be safe and most of all; smile and have fun. Big Island Motorcycles can help create memories for a lifetime.



ATV Outfitters Introduces Mountain Bike Outfitters

In 2010, ATV Outfitters will be adding mountain bike tours to their list of tours on the north tip of the island. Enjoy top of the line Santa Cruz mountain bikes as you ride along downhill trails with breathtaking coastal scenery.

#8

Things To Do In Hawaii and Waikoloa

Unique Hawaii Activities

Horseback Riding on the Big Island of Hawaii

For anyone looking for a more historical mode of transportation while viewing the island from a different vantage point, horseback riding is a great activity for the entire family.

There are quite a few stables available to travelers and they offer different experiences as well. See valleys, rivers, waterfalls and places like the "Valley of the Kings". This was home to many of the rulers of Hawaii, site of important Heiaus (sacred temples), ancient burial caves and also a place of refuge.

Another option is to explore the open range, getting out and moving faster for those who are more experienced. There are also tours for anyone with less experience or younger children looking to understand and give riding a try.

Meals are included on some excursions and there are some physical requirements and varying tour times. Children's programs are also available depending on the stable.



Hilton Waikoloa Village Pool Pass

The Hilton Waikoloa Village encompasses 62 acres of pristine oceanfront property on the Golden Coast of Kohala. Since 2005, over \$100 million has been invested in capital improvements. From the reupholstering of the canal boats and engine replacements, to the system upgrade. You are sure to enjoy a fun day riding on both modes of transportation as you visit each of the four swimming pools.

The beautiful Hilton Waikoloa Village now offers a day use room with pool passes for all Big Island visitors based on hotel availability. It allows up to four persons including children to utilize a guest room, the pools, and slides from the hours of 10am to 6pm



for \$160. Registering earlier than 10am is possible, however access to both the pools and slide begin at 10am.

Reservations for this activity can be made 7 days or less in advance. Registration begins at the front desk of the hotel and ends at the pool desk. Resort staff will direct you beyond

the front lobby. Parking validation is not included in the price of the room however if any of their restaurants are utilized during the day (minimum of \$50), parking will be validated. Otherwise self-parking is \$15.

Towels are included; just bring your sunscreen, personal items, and loved ones to enjoy the day in the sun.

Mauna Kea Stargazing

The original Sunset and Stargazing tours started 25 years ago. Back then, Pat Wright conducted his tours from an old Land Cruiser. The Land Cruiser has since been replaced with Deluxe Arctic Survival Parkas and Gloves. What has not changed is the passion with which this tour continues today.

The trip begins mid-afternoon. Depending on your pick up location (starbucks in the Waikoloa Kings Shops), an exclusive Van Terra vehicle will transport you. Your tour time will last 7 to 8.25 hours. Informative guides will teach you about geology, natural history, and the geography of the island, as they take you on your journey to Mauna Kea.

These spacious four wheel drive vans can easily hold 13 passengers. Oversized windows, heating and air conditioning systems, upgraded suspension, overhead storage, and an aisle height of 6'2" are some of the luxurious features. The initial stop at the Mauna Kea Visitor Center will allow you to acclimate to the 9,000' elevation and enjoy a hearty supper.

Select in advance one of the following delicious meals to be served at the Onizuka Visitors Center Lanai:

- KhoChu Jang Glazed Beef Ribs (spicy sweet), Jasmine Rice, Namasu (cucumber) Salad (Served Hot)
- Teriyaki Glazed Chicken, Jasmine Rice and a Pineapple Relish (Served Hot)



- Tofu Spinach Wrap with a Cream Sauce and a Cranberry Tabbouleh Salad (Served cold) ** Can be made vegan

All choices are served with a scrumptious, homemade chocolate brownie. Beverages with dinner are not provided, but may be purchased at the Visitors Center, or you may bring along a non-alcoholic drink.

Marvel at the telescope viewings, learn about the astronomers who work there, then snuggle into your parka and gloves for the steep 1/2 hour drive to the summit area. Here your guide will point out the observatories as they begin to open and rotate into position.

Grab a photo opportunity of a lifetime as the sun begins to set. When the sunset colors have passed, you will descend to mid mountain where the sky is equally clear, but the climate and air is more comfortable for stargazing. Hot drinks and cookies served halfway through the evening.

Tour Rate: \$197

Restrictions: This tour is not for those with heart or respiratory conditions or who have/ or will scuba dive within 24 hours of the tour. No children under the age of 9 and no children under 13 allowed above 9000 ft.

Tips: Bring a sweater, a bottle of water, and a beverage to have with your dinner and snacks. Bring fresh camera batteries.

Zipline Big Island Style

The Big Island is home to a new and exciting activity that is in great demand. Once used as a mode of transportation for people and goods, zip lining started a craze for adventurous folks looking for an adrenaline rush. The start up of Big Island Eco Adventures Zipline Canopy Tour has combined the beauty of the Big Island with the thrill of the zip line. This low impact activity requires low to moderate physical strength, which expands it's popularity among more than just the adrenaline junkies.

Located in Kapa'au, just past the King Kamehameha statue is the check in base yard for the Zipline Canopy Tour. It is approximately an hour's drive from Waikoloa

Beach Resort. The maximum group count per tour will not exceed ten guests to ensure personal attention. Guests are then tucked into a Pinzgauer, a 6wd Swiss Army vehicle, for a 30 minute off road journey. The beauty of North Kohala provides gorgeous scenery as the ride takes you from a few hundred feet above sea level to the 2200' level. Keep on the look out for wild pigs and wild cows.

Once you arrive at the course, a brief hike will deliver you to the first zip line which is in the 200' long range. It is the keiki line, and it designed to gently welcome you to the ziplines. The remaining 7 ziplines increase in length, with the last one spanning approximately 1100' feet. The ziplines give you an awesome view of the forest, ravines and at least 3 waterfalls. The last two will take your breath away with views of Maui, the Kohala Lighthouse and a waterfall. You may be an expert steersman by the end of the tour.



The course also includes a wooden bridge and a suspension bridge. A cantilevered pavilion affectionately known as the "Mac Nut Hut" offers a vantage point overlooking a 32' waterfall. Delicious homemade snacks such as granola energy bars, pineapple or banana bread, or crackers with lilikoi butter have been prepared for you by a local children's group. Home grown fresh fruits, macadamia nuts and Aloha drinks are also part of the snack stop.

The four hour adventure ends with your downhill Pinzgauer safari. During the winter season, you'll also want to keep an eye out for whale sightings. This tour is one of the hottest new attractions, sure to leave you with a distinct memory of the Big Island that is only now available.

#9

Things To Do In Hawaii and Waikoloa

Whale Watching

Whale Watching in Hawaii

The humpback whales are back to the Big Island of Hawaii to enjoy the warm waters for the winter. These fascinating creatures are a must see if you have not seen them before.

Every year they show up to the Hawaiian Islands around December and stay until March for mating season. If you stay at any of the oceanfront or beachfront properties you can typically see them from your lanai with binoculars. There are some oceanfront villas at Hali'i Kai that offer some great whale watching. You can spend hours sitting on your lanai and watching then play in the blue waters of the Pacific.

There are several whale watch tours offered on the island that take you up close with the mammals. OceanSports is the most conveniently located at A'Bay at Waikoloa Beach Resort. Many of the whale watches guarantee seeing a whale. When there are a lot of whales many of the snorkeling tours turn into whale watches as you pass so many on your way to the snorkeling destination.

If you stay at Kolea at Waikoloa or Hali'i Kai at Waikoloa you can see the whales just off the lanais of your vacation rentals.

Body Glove Whale Watching

During the winter months the most popular activity is go and see the amazing humpback whales up close. On the tour you will be taken off the coasts of the Big Island to get up close sightings of these amazing creatures along with dolphins



and other marine life. There is nothing like getting to see one of these creatures breach out of the water or to see a mother and her baby traveling along together in the waters. While on the tour you will enjoy an open bar along with snacks and refreshments.

Whale Watching at Hali'i Kai

You know the winter has arrived at Hali'i Kai when the surf is up and there are whale sightings. Having managed condos in almost every complex on the Kohala Coast on the Big Island of Hawaii I get to enjoy some of the great things each property has to offer while working. There is nothing I enjoy more than to walk in to one of our villas at Hali'i Kai in the winter months and seeing the whales frolic in the ocean and well as watching the waves crash into lava rocks. Hali'i Kai 14G is an oceanfront villa and offers an unobstructed panoramic view of the ocean. You can actually hear the whales from this villa and feel the mist of the crashing waves. Any of the villas in building 12 give you the opportunity to not only enjoy the crashing waves, but to also watch the waves roll in as you are watching golf and the whales.



Waikoloa Vacation Rentals
www.waikoloavacationrentals.com

